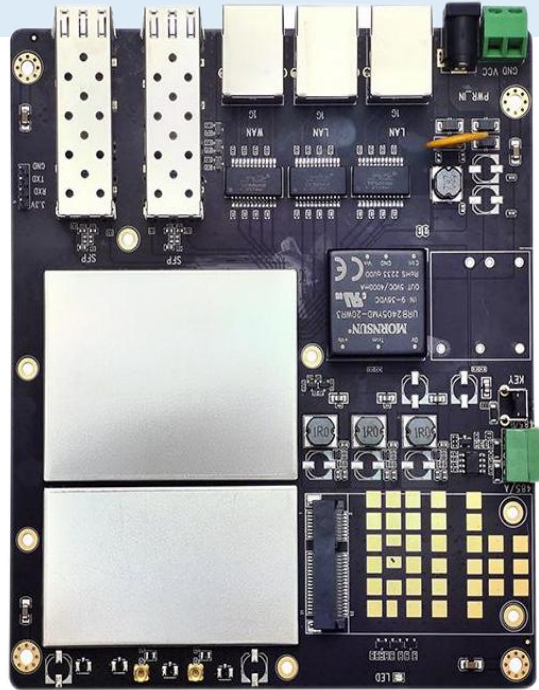


MX6012-IS 802.11ax Intrinsic Safety Dual-Band Wireless Access Point Board

Features

- Chipset: IPQ6010+QCA8075+QCN5052+QCN5022
- 2.4GHz rate 573.5Mbps, 5.8GHz rate 1200Mbps
- Support access point, client, WDS access point, WDS client mode
- Support 2x2MIMO, dual-band combined MMCX connector
- Support extended Uart/RS-485/5G cellular module
- Includ 3* 1Gbps ethernet RJ45 Port and 2* 1Gbps SFP
- Professional intrinsic safety power supply design, with under-voltage protection, output short-circuit, over-current, over-voltage protection, input anti-reverse connection function
- WIFI stand-alone power consumption $\leq 15W$, extended 5G network power consumption $\leq 18W$;
- DC or 2-PIN 5.08mm terminals for power supply, voltage range as 9~36V
- Meet the intrinsic safety requirement



Description

MX6012-IS WiFi6 intrinsic safety Dual-Band Wireless Access Point Board supports the IEEE 802.11a/b/g/n/ac/ax protocol with a maximum rate of 1773.5Mbps.

It has M-Pcie (USB3.0) interface, Easy access to 5G/4G cellular modules.

Support multiple working modes of AP/Client/Mesh to meet different application requirements.

It is flexibly suitable for different network access schemes, supports wireless positioning function, supports KVR seamless roaming technology, automatically detects and seamlessly switches, and users can roam without perception within the coverage of network signals.

MX6012-IS provides 3* 1Gbps ethernet RJ45 Port and 2* 1Gbps SFP 2.4G/5.8G dual-band combined antenna ports, which support access to various types of antennas. The protection design of power supply and interface allows the MX6012-IS to provide a stable and reliable wireless network in harsh environments.

Nanjing MAXON O.E. TECH. CO., LTD

Add: 6/F, Building A3, Zidong International Creative Park, Zidong Road, Qixia District, Nanjing, China.

Specification

Chipset	IPQ6010+QCA8075+QCN5052+QCN5022
External FEM	QPF4588A+QPF4288A
Memory	1GB DDR3+ 16MB Nor Flash+ 128MB Nand Flash
Frequency Range	2.4G: 2412MHz~2472MHz; 5.8G: 5180MHz~5320MHz, 5745MHz~5825MHz
Wireless Rate	1773.5Mbps
Data Modulation Method	11n: 64-QAM MCS7 11ac: 256-QAM MCS9 11ax: 1024-QAM MCS11
Transmit Power	2.4G (11ax): HT40: 24dBm@MCS0 5.8G (11ax): HT80: 24dBm@MCS0
Receive Sensitivity	11ax: HE20 MCS0 <-95dBm / MCS11 <-62dBm HE40 MCS0 <-89dBm / MCS11 <-60dBm HE80 MCS0 <-86dBm / MCS11 <-56dBm
Network Port	3x1Gbps RJ45+2x1Gbps SFP
Supply Voltage	9V~36V
Machine Power Consumption	WiFi power consumption≤15W, Extended 5G Internet power consumption≤18W
Antenna Interface	2xMMCX, dual frequency combined
UART	Uart interface, 3Pin
RS-485	RS-485 (3Pin)
LTE Interface	4G/5G LTE Slot Mini-PCIe (USB3.0 bus)

MAXON

Link Of Your Think

Nanjing MAXON O.E. TECH. CO., LTD

TEL: 86-25-86380932

WEB: www.mxcomm.cn

E-MAIL: info@maxonc.com

Nanjing MAXON O.E. TECH. CO., LTD

Add: 6/F, Building A3, Zidong International Creative Park, Zidong Road, Qixia District, Nanjing, China.

SIM Card Slot	Micro SIM
Indicator Light	Status indicator, bicolor
Button	Reset
Size (L*W*H)	160 x 136 x 21.5mm (±2)
Color	Matte black
Operating Temperature	-20°C ~ +70°C
Storage Temperature	-40°C ~ +90°C
Operating Humidity (non-condensing)	10% ~ 95%
Storage Humidity (non-condensing)	5% ~ 90%
Certification Standards	RoHS/REACH

Radio Frequency Parameters (2.4GHz)

	RATE	TRANSMIT POWER (PER CHAIN)	TRANSMIT POWER (DUAL CHAIN)	TOLERANCE	RECEIVE SENSITIVITY	TOLERANCE
2.4GHz 802.11b	1Mbps	21dBm	24dBm	±2dB	-96dBm	±2dB
	2Mbps	21dBm	24dBm	±2dB	-96dBm	±2dB
	5.5Mbps	21dBm	24dBm	±2dB	-95dBm	±2dB
	11Mbps	21dBm	24dBm	±2dB	-94dBm	±2dB
2.4GHz 802.11g	6Mbps	21dBm	24dBm	±2dB	-95dBm	±2dB
	9Mbps	21dBm	24dBm	±2dB	-94dBm	±2dB
	12Mbps	21dBm	24dBm	±2dB	-92dBm	±2dB
	18Mbps	21dBm	24dBm	±2dB	-90dBm	±2dB
	24Mbps	21dBm	24dBm	±2dB	-87dBm	±2dB
	36Mbps	21dBm	24dBm	±2dB	-85dBm	±2dB
	48Mbps	21dBm	24dBm	±2dB	-83dBm	±2dB
	54Mbps	21dBm	24dBm	±2dB	-81dBm	±2dB

MAXON

Link Of Your Think

Nanjing MAXON O.E. TECH. CO., LTD

TEL: 86-25-86380932

WEB: www.mxcomm.cn

E-MAIL: info@maxon.com

Nanjing MAXON O.E. TECH. CO., LTD

Add: 6/F, Building A3, Zidong International Creative Park, Zidong Road, Qixia District, Nanjing, China.

	RATE	TRANSMIT POWER (PER CHAIN)	TRANSMIT POWER (DUAL CHAIN)	TOLERANCE	RECEIVE SENSITIVITY	TOLERANCE
2.4GHz 802.11n HT20	MCS 0	21dBm	24dBm	±2dB	-95dBm	±2dB
	MCS 1	21dBm	24dBm	±2dB	-94dBm	±2dB
	MCS 2	21dBm	24dBm	±2dB	-92dBm	±2dB
	MCS 3	21dBm	24dBm	±2dB	-90dBm	±2dB
	MCS 4	21dBm	24dBm	±2dB	-88dBm	±2dB
	MCS 5	21dBm	24dBm	±2dB	-86dBm	±2dB
	MCS 6	21dBm	24dBm	±2dB	-83dBm	±2dB
	MCS 7	20dBm	23dBm	±2dB	-80dBm	±2dB
2.4GHz 802.11n HT40	MCS 0	21dBm	24dBm	±2dB	-94dBm	±2dB
	MCS 1	21dBm	24dBm	±2dB	-92dBm	±2dB
	MCS 2	21dBm	24dBm	±2dB	-90dBm	±2dB
	MCS 3	21dBm	24dBm	±2dB	-88dBm	±2dB
	MCS 4	21dBm	24dBm	±2dB	-86dBm	±2dB
	MCS 5	21dBm	24dBm	±2dB	-83dBm	±2dB
	MCS 6	21dBm	24dBm	±2dB	-80dBm	±2dB
	MCS 7	20dBm	23dBm	±2dB	-77dBm	±2dB
2.4GHz 802.11ax HE20	MCS 0	21dBm	24dBm	±2dB	-96dBm	±2dB
	MCS 1	21dBm	24dBm	±2dB	-95dBm	±2dB
	MCS 2	21dBm	24dBm	±2dB	-92dBm	±2dB
	MCS 3	21dBm	24dBm	±2dB	-90dBm	±2dB
	MCS 4	21dBm	24dBm	±2dB	-87dBm	±2dB
	MCS 5	21dBm	24dBm	±2dB	-84dBm	±2dB
	MCS 6	21dBm	24dBm	±2dB	-81dBm	±2dB
	MCS 7	20dBm	23dBm	±2dB	-78dBm	±2dB
	MCS 8	19dBm	21dBm	±2dB	-75dBm	±2dB
	MCS 9	19dBm	21dBm	±2dB	-72dBm	±2dB
	MCS 10	17dBm	20dBm	±2dB	-69dBm	±2dB
	MCS 11	16dBm	19dBm	±2dB	-66dBm	±2dB

MAXON

Link Of Your Think

Nanjing MAXON O.E. TECH. CO., LTD

TEL: 86-25-86380932

WEB: www.mxcomm.cn

E-MAIL: info@maxonc.com

Nanjing MAXON O.E. TECH. CO., LTD

Add: 6/F, Building A3, Zidong International Creative Park, Zidong Road, Qixia District, Nanjing, China.

	RATE	TRANSMIT POWER (PER CHAIN)	TRANSMIT POWER (DUAL CHAIN)	TOLERANCE	RECEIVE SENSITIVITY	TOLERANCE
2.4GHz 802.11ax HE40	MCS 0	21dBm	24dBm	±2dB	-94dBm	±2dB
	MCS 1	21dBm	24dBm	±2dB	-93dBm	±2dB
	MCS 2	21dBm	24dBm	±2dB	-90dBm	±2dB
	MCS 3	21dBm	24dBm	±2dB	-87dBm	±2dB
	MCS 4	21dBm	24dBm	±2dB	-84dBm	±2dB
	MCS 5	21dBm	24dBm	±2dB	-81dBm	±2dB
	MCS 6	21dBm	24dBm	±2dB	-78dBm	±2dB
	MCS 7	20dBm	23dBm	±2dB	-75dBm	±2dB
	MCS 8	19dBm	21dBm	±2dB	-72dBm	±2dB
	MCS 9	19dBm	21dBm	±2dB	-69dBm	±2dB
	MCS 10	17dBm	20dBm	±2dB	-66dBm	±2dB
	MCS 11	16dBm	19dBm	±2dB	-64dBm	±2dB

Radio Frequency Parameters (5.8GHz)

	RATE	TRANSMIT POWER (PER CHAIN)	TRANSMIT POWER (DUAL CHAIN)	TOLERANCE	RECEIVE SENSITIVITY	TOLERANCE
5.8GHz 802.11a	6Mbps	21dBm	24dBm	±2dB	-95dBm	±2dB
	9Mbps	21dBm	24dBm	±2dB	-93dBm	±2dB
	12Mbps	21dBm	24dBm	±2dB	-90dBm	±2dB
	18Mbps	21dBm	24dBm	±2dB	-88dBm	±2dB
	24Mbps	21dBm	24dBm	±2dB	-85dBm	±2dB
	36Mbps	21dBm	24dBm	±2dB	-83dBm	±2dB
	48Mbps	21dBm	24dBm	±2dB	-80dBm	±2dB
	54Mbps	21dBm	24dBm	±2dB	-78dBm	±2dB

MAXON

Link Of Your Think

Nanjing MAXON O.E. TECH. CO., LTD

TEL: 86-25-86380932

WEB: www.mxcomm.cn

E-MAIL: info@maxonc.com

Nanjing MAXON O.E. TECH. CO., LTD

Add: 6/F, Building A3, Zidong International Creative Park, Zidong Road, Qixia District, Nanjing, China.

	RATE	TRANSMIT POWER (PER CHAIN)	TRANSMIT POWER (DUAL CHAIN)	TOLERANCE	RECEIVE SENSITIVITY	TOLERANCE
5.8GHz 802.11n/ac VHT20	MCS 0	21dBm	24dBm	±2dB	-94dBm	±2dB
	MCS 1	21dBm	24dBm	±2dB	-92dBm	±2dB
	MCS 2	21dBm	24dBm	±2dB	-89dBm	±2dB
	MCS 3	21dBm	24dBm	±2dB	-87dBm	±2dB
	MCS 4	21dBm	24dBm	±2dB	-85dBm	±2dB
	MCS 5	21dBm	24dBm	±2dB	-83dBm	±2dB
	MCS 6	21dBm	24dBm	±2dB	-80dBm	±2dB
	MCS 7	20dBm	23dBm	±2dB	-77dBm	±2dB
	MCS 8	19dBm	22dBm	±2dB	-75dBm	±2dB
5.8GHz 802.11n/ac VHT40	MCS 0	21dBm	24dBm	±2dB	-92dBm	±2dB
	MCS 1	21dBm	24dBm	±2dB	-90dBm	±2dB
	MCS 2	21dBm	24dBm	±2dB	-88dBm	±2dB
	MCS 3	21dBm	24dBm	±2dB	-85dBm	±2dB
	MCS 4	21dBm	24dBm	±2dB	-82dBm	±2dB
	MCS 5	21dBm	24dBm	±2dB	-79dBm	±2dB
	MCS 6	21dBm	24dBm	±2dB	-76dBm	±2dB
	MCS 7	20dBm	23dBm	±2dB	-73dBm	±2dB
	MCS 8	19dBm	22dBm	±2dB	-70dBm	±2dB
	MCS 9	19dBm	22dBm	±2dB	-67dBm	±2dB
5.8GHz 802.11ac VHT80	MCS 0	21dBm	24dBm	±2dB	-87dBm	±2dB
	MCS 1	21dBm	24dBm	±2dB	-85dBm	±2dB
	MCS 2	21dBm	24dBm	±2dB	-83dBm	±2dB
	MCS 3	21dBm	24dBm	±2dB	-80dBm	±2dB
	MCS 4	21dBm	24dBm	±2dB	-78dBm	±2dB
	MCS 5	21dBm	24dBm	±2dB	-75dBm	±2dB
	MCS 6	21dBm	24dBm	±2dB	-73dBm	±2dB
	MCS 7	20dBm	23dBm	±2dB	-70dBm	±2dB
	MCS 8	19dBm	22dBm	±2dB	-67dBm	±2dB
	MCS 9	19dBm	22dBm	±2dB	-64dBm	±2dB

MAXON

Link Of Your Think

Nanjing MAXON O.E. TECH. CO., LTD

TEL: 86-25-86380932

WEB: www.mxcomm.cn

Nanjing MAXON O.E. TECH. CO., LTD

Add: 6/F, Building A3, Zidong International Creative Park, Zidong Road, Qixia District, Nanjing, China.

	RATE	TRANSMIT POWER (PER CHAIN)	TRANSMIT POWER (DUAL CHAIN)	TOLERANCE	RECEIVE SENSITIVITY	TOLERANCE
5.8GHz 802.11ax HET20	MCS 0	21dBm	24dBm	±2dB	-95dBm	±2dB
	MCS 1	21dBm	24dBm	±2dB	-93dBm	±2dB
	MCS 2	21dBm	24dBm	±2dB	-90dBm	±2dB
	MCS 3	21dBm	24dBm	±2dB	-87dBm	±2dB
	MCS 4	21dBm	24dBm	±2dB	-83dBm	±2dB
	MCS 5	21dBm	24dBm	±2dB	-80dBm	±2dB
	MCS 6	21dBm	24dBm	±2dB	-77dBm	±2dB
	MCS 7	20dBm	23dBm	±2dB	-74dBm	±2dB
	MCS 8	19dBm	22dBm	±2dB	-71dBm	±2dB
	MCS 9	19dBm	22dBm	±2dB	-68dBm	±2dB
	MCS 10	17dBm	20dBm	±2dB	-65dBm	±2dB
	MCS 11	16dBm	19dBm	±2dB	-62dBm	±2dB
5.8GHz 802.11ax HE40	MCS 0	21dBm	24dBm	±2dB	-89dBm	±2dB
	MCS 1	21dBm	24dBm	±2dB	-87dBm	±2dB
	MCS 2	21dBm	24dBm	±2dB	-85dBm	±2dB
	MCS 3	21dBm	24dBm	±2dB	-83dBm	±2dB
	MCS 4	21dBm	24dBm	±2dB	-81dBm	±2dB
	MCS 5	21dBm	24dBm	±2dB	-78dBm	±2dB
	MCS 6	21dBm	24dBm	±2dB	-75dBm	±2dB
	MCS 7	20dBm	23dBm	±2dB	-72dBm	±2dB
	MCS 8	19dBm	22dBm	±2dB	-69dBm	±2dB
	MCS 9	19dBm	22dBm	±2dB	-66dBm	±2dB
	MCS 10	17dBm	20dBm	±2dB	-63dBm	±2dB
	MCS 11	16dBm	19dBm	±2dB	-60dBm	±2dB

MAXON

Link Of Your Think

Nanjing MAXON O.E. TECH. CO., LTD

TEL: 86-25-86380932

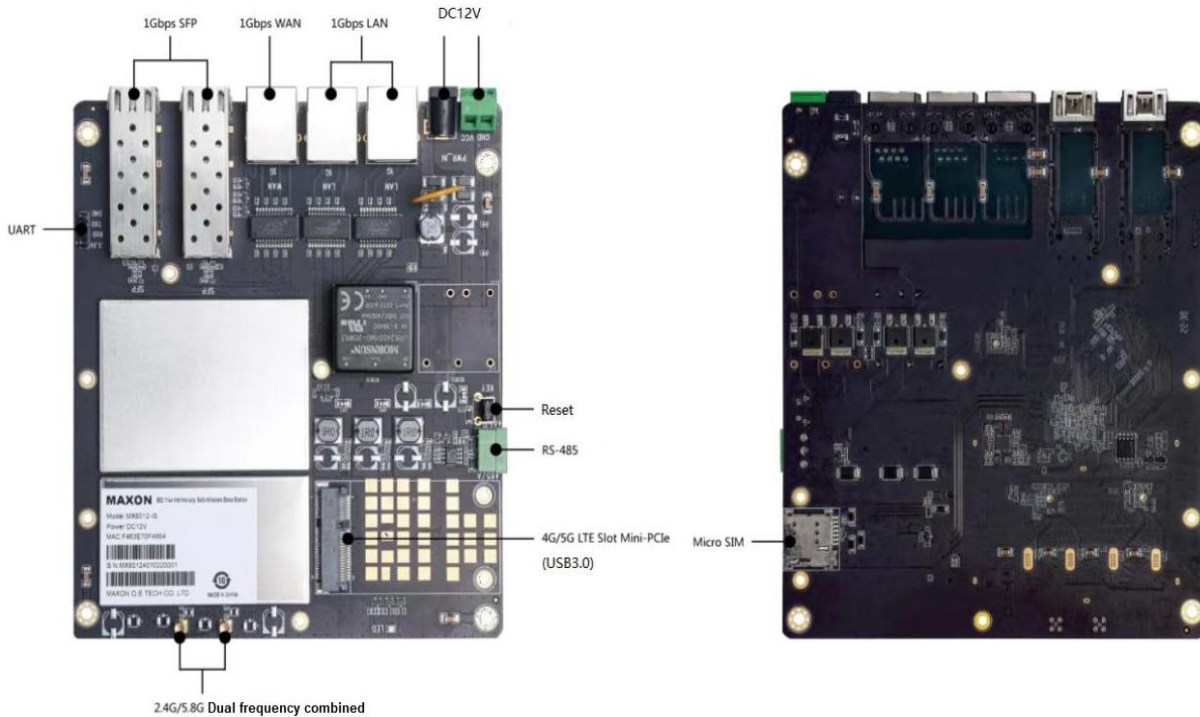
WEB: www.mxcomm.cn

Nanjing MAXON O.E. TECH. CO., LTD

Add: 6/F, Building A3, Zidong International Creative Park, Zidong Road, Qixia District, Nanjing, China.

	RATE	TRANSMIT POWER (PER CHAIN)	TRANSMIT POWER (DUAL CHAIN)	TOLERANCE	RECEIVE SENSITIVITY	TOLERANCE
5.8GHz 802.11ax HE80	MCS 0	21dBm	24dBm	±2dB	-86dBm	±2dB
	MCS 1	21dBm	24dBm	±2dB	-84dBm	±2dB
	MCS 2	21dBm	24dBm	±2dB	-81dBm	±2dB
	MCS 3	21dBm	24dBm	±2dB	-79dBm	±2dB
	MCS 4	21dBm	24dBm	±2dB	-76dBm	±2dB
	MCS 5	21dBm	24dBm	±2dB	-74dBm	±2dB
	MCS 6	21dBm	24dBm	±2dB	-71dBm	±2dB
	MCS 7	20dBm	23dBm	±2dB	-68dBm	±2dB
	MCS 8	19dBm	22dBm	±2dB	-65dBm	±2dB
	MCS 9	19dBm	22dBm	±2dB	-62dBm	±2dB
	MCS 10	17dBm	20dBm	±2dB	-59dBm	±2dB
	MCS 11	16dBm	19dBm	±2dB	-56dBm	±2dB

Components



MAXON

Link Of Your Think

Nanjing MAXON O.E. TECH. CO., LTD

TEL: 86-25-86380932

WEB: www.mxcomm.cn

E-MAIL: info@maxon.com

规格	MC226M-24T	MC226M-24T2SC	MC226M-24T2P
下行端口	24个 10/100Base-TX以太网端	24个 10/100Base-TX以太网端	24个 10/100Base-TX以太网端
上行端口	与下行接口共用	2个百兆SC接口	2个百兆Sfp插槽
电源输入	交直流电源, 冗余电源85-265VAC/77-300VDC		
电源功耗	<20W		
故障输出	继电器输出故障报警: 1A@24VDC		
电源保护	支持过载保护和反向保护		
MAC地址表	8K		
路由特性	支持IPv4、IPv6静态路由		
外形尺寸 (mm) (宽x深x高)	440x230x44.4		
储存温度	-40°C ~ 85 °C		
工作温度	-40°C ~ 75 °C		
工作湿度	5%-95%		
散热方式	无风扇, 自然散热		
防护等级	IP40		
安装方式	机柜挂耳或托盘安装		
重量 (g)	≤5KG		

MC226M-24T	MC226M-24T	MC226M-24T2SC
24个 10/100Base-TX以太网端口	24 10/100Base-TX Ethernet ports	24 10/100Base-TX Ethernet ports
与下行接口共用	Shared with downlink interface	2 100M SC ports
MC226M-24T	MC226M-24T2SC	
24个 10/100Base-TX以太网端口	24 10/100Base-TX E	
2个百兆SC接口	2 100M SC ports	
MC226M-24T	MC226M-24T2P	
24个 10/100Base-TX以太网端口	24 10/100Base-TX E	
2个百兆Sfp插槽	2 100M Sfp slots	

设备管理	支持SNMP 支持WEB网管 支持DHCP-client 支持用户口令保护 支持命令行配置	device management
网络冗余	MSTP/RSTP/STP MRP ERPS	network redundancy
警告/监测系统	通过继电器输出进行故障报警 通过系统日志记录和浏览事件Syslog上报	Warning/Monitoring System

	支持SNMP通过trap发出事件警告通知
Console控制口	RJ45口, RS-232控制线, 115200bps-8-N-1

Console control port

MC226M-24T2P	
24 10/100Base-TX Ethernet ports	
2 100M Sfp slots	

24 Ethernet ports

2 Ethernet ports

Support SNMP Support WEB Support DHCP-client Support user password protection Support command line configuratio
MSTP/RSTP/ STP MRP ERPS
Fault alarm via relay output Record and browse event Syslog reports through system logs

Support
SNMP to
issue event
warning
notifications
through
traps

RJ45 port,
RS-232
control line,
115200bps-
8-N-1